



# 01

## Palmer Wind Farm

December 2013

TrustPower is investigating the possibility of developing the Palmer Wind Farm in the Mid Murray Council area located on the ranges between Palmer, Tungkillo and Sanderston.

This site is approximately 30km long on roughly 10,000 hectares and has been selected due to the excellent wind energy potential and its close proximity to the Tungkillo Substation.

This newsletter provides an update on the Palmer Wind Farm project status, next steps and proposed timing for the project moving forward.

### Revised Timing

The Palmer Wind Farm project team is working hard to complete site survey works and specialist technical studies to address queries raised by the community to date. In order to provide feedback to the queries raised prior to lodging the formal planning application with Mid Murray Council and to accommodate concerns regarding availability for consultation over the Christmas school holidays, TrustPower has made the decision to postpone lodging the planning application until February 2014. This will allow sufficient time to go back to the community with the results of the technical studies through the follow-up workshops and information days that will be held at the end of January 2014.

We will confirm and send invitations for the workshops and information days during January 2014. If you have not registered to receive updates on the Palmer Wind Farm please contact us to ensure you receive details of the next round of consulting activities. Details will also be advertised in the local papers and on our website.

### Update on Activities

Since the previous Community Information Sessions and Workshops the Palmer Wind Farm project team has continued consulting and informing members of the local community, a range of government departments and other key stakeholders of the project details. The feedback and input obtained through the community consultation has been provided to the various experts conducting the technical studies to ensure they are incorporated.

Consultation will be ongoing with relevant government agencies and non-government organisations for feedback and endorsement on the draft technical reports prior to lodging the planning application early 2014.

### Summary of Activities to Date

**Landscape & visual impact assessment** report is being finalised.

Initial computer generated **individual visual simulations** have been completed where agreed for neighbouring residences, to provide an indication of the extent of turbine visibility. Where required these simulations will be followed up by more accurate visual photo montages.

The draft **Traffic Management Plan** has been finalised and discussions are underway with Council on potential road upgrades and maintenance requirements.

**Environmental Management Plan** is being developed for consultation.

**Transmission line** alignment has been refined.

Majority of the **ecological surveys** have been completed.

Aboriginal and European **heritage surveys** are well underway.

Commenced further specific investigations into historic **property value** impacts around wind farms.

**Aviation assessments** and agency endorsements have been completed.

On-site layout **design verifications** have been conducted.

**Hydrology / geology** studies have been completed.

**Noise** compliance background monitoring has commenced to feed into final compliance modelling.

**Economic benefit** assessment has been completed.

### For more information please visit the project website

[www.trustpower.co.nz/palmerwindfarm](http://www.trustpower.co.nz/palmerwindfarm)

[www.facebook.com/palmerwindfarm](https://www.facebook.com/palmerwindfarm)

**or contact the Project Team on** 1800 648 690

**or email** [palmerwindfarm@trustpower.com.au](mailto:palmerwindfarm@trustpower.com.au)

**Office Address** 26 Greenhill Road Wayville 5034 SA

**Postal Address** GPO Box 1512 Adelaide 5001 SA

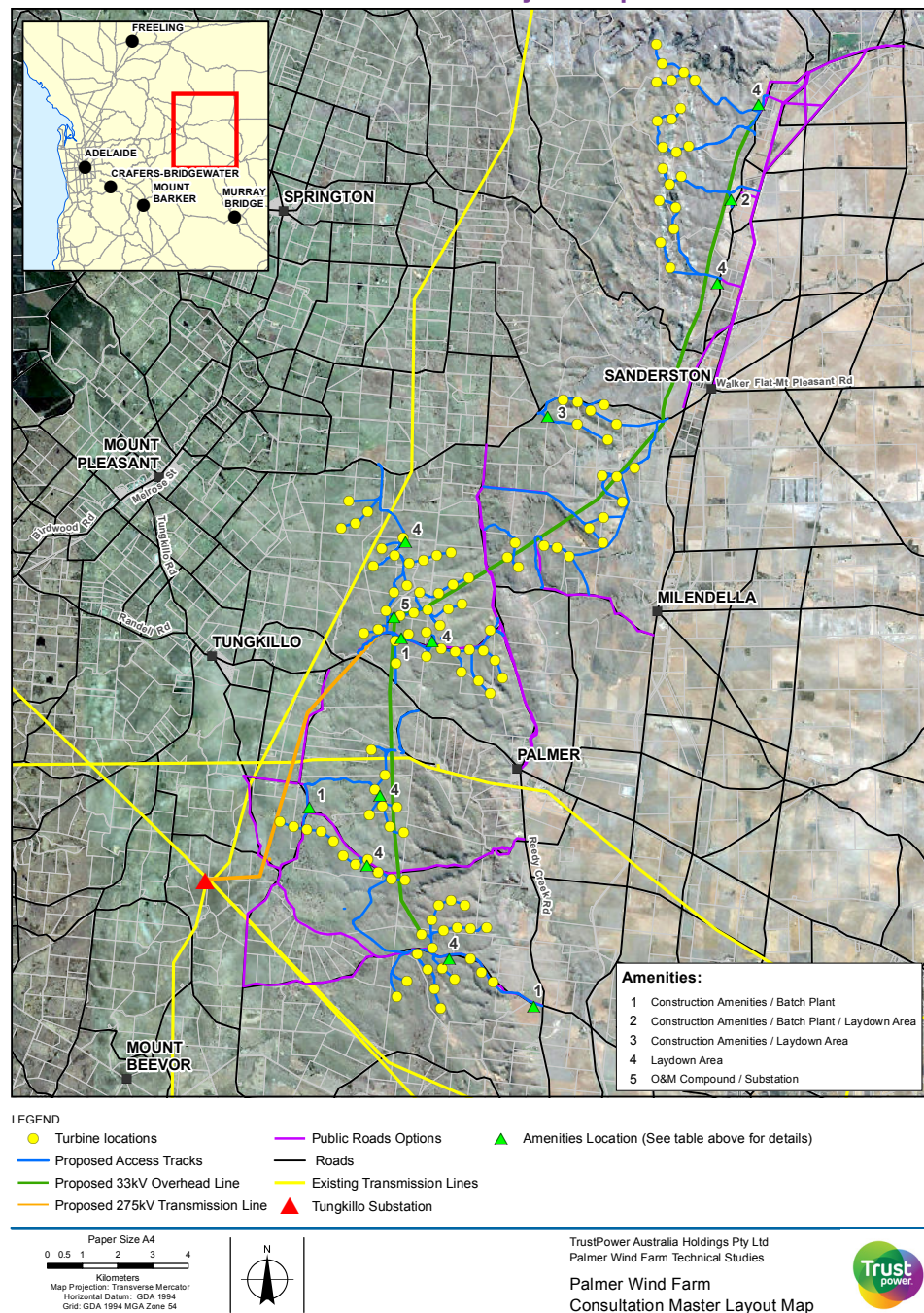
newsletter



## Layout Development

The wind farm layout and design has been amended to incorporate findings of the site investigations and consideration of feedback from stakeholders and the community. As a result a total of 6 turbines have been removed from the original layout with a further relocation of 86 of the remaining 124 turbines. The locations of associated site facilities, transmission lines, on-site tracks and access road options have been further refined.

### Palmer Wind Farm Consultation Master Layout Map



## Planning Approval Process

The Mid Murray Council Development Assessment Panel (CDAP) will be the approval authority for the Palmer Wind Farm. The diagram below shows the various consultation and planning approval steps. In addition to the extensive voluntary public consultation steps undertaken by TrustPower prior to lodgement, there will be opportunity for submissions to the application during the formal CDAP planning application assessment process.



## Wind Farms & Health Latest Findings

There has been two significant outcomes recently released on wind farms and health concerns that add to the growing and overwhelming scientific studies to date that reinforce wind farms do not cause health issues.

In South Australia the EPA released a noise study on EnergyAustralia's Waterloo Wind Farm to address claims of non-compliance and health impacts. The study concluded that the wind farm was operating within its guidelines and that noise nuisance claims were not attributed to the wind farm (some coincided with periods when the wind farm was actually turned off). The results of the study concluded "there is no evidence linking the noise from the wind farm to adverse impacts on residents" and that the EPA criteria for wind farm noise are adequate. A summary of the report and its findings can be viewed at: [http://www.epa.sa.gov.au/environmental\\_info/noise/wind\\_farms/waterloo\\_wind\\_farm\\_environmental\\_noise\\_study/report\\_summary](http://www.epa.sa.gov.au/environmental_info/noise/wind_farms/waterloo_wind_farm_environmental_noise_study/report_summary)

In Victoria, the Victorian Civil and Administrative Tribunal approved Infigen Energy's Cherry Tree wind farm, after an initial decision was put on hold pending the outcome of several studies, including health impact. The decision reinforce advice from the NSW and Victorian Health Departments that there is no evidence to support claims that inaudible sounds can have direct physiological effects. The judgement is available on our website.

## Community / Benefit scheme

TrustPower has progressed high level discussions with local community organisations on the establishment of a suitably representative community led group to administer the community fund for the Palmer Wind Farm. This will be implemented when construction of the wind farm commences.

In addition, TrustPower continues to explore the possibility of a project benefit sharing scheme for neighbouring properties to the wind farm.

We hope to be in a position to confirm the shape of such a neighbouring benefit scheme in the next few weeks.